



SOULARD TRAFFIC CALMING STUDY

PUBLIC OPEN HOUSE
June 16, 2022



TONIGHT

- 1 INTRODUCTIONS
- 2 PROJECT BACKGROUND & GOALS
- 3 STUDY PROCESS
- 4 EXISTING CONDITIONS
- 5 TRAFFIC CALMING RECOMMENDATIONS
- 6 QUESTION & ANSWER



INTRODUCTIONS



SOULARD SBD INVOLVEMENT

- **Approved By Voters In 1994 As A “Special Taxing District”**
- **Funded 100% By Property Taxes In The District**
- **Established Specifically To “Enhance Security And Protection Of Residents And Property Owners Of The District”**
- **Role In Soulard Traffic Calming**
 - **Increase Pedestrian Safety**
 - **Slow Vehicular Traffic Speeds**
 - **Improve Vehicular Roadway Compliance**
 - **Reduce Vehicular Cut-through And Commercial Truck Traffic**



SOULARD CID INVOLVEMENT

- **Approved By Voters In 2019 As A “Community Improvement District”**
- **Funded By 1% Retail Sales Tax In The District**
- **Established To Fund A Broad Variety Of Services And Projects To Improve The District (e.g, ,Public Improvements, Infrastructure, Clean-Up/Maintenance, Transportation & Parking Solutions, Marketing & Branding And Others.**
- **Role In Souldard Traffic Calming**
 - **Infrastructure Improvement**
 - **Enhance Historical Character Of The Neighborhood**
 - **Marketing And Branding**
 - **Beautification**



MEET OUR TEAM

CBB



Jacquie Knight, AICP
Senior Multimodal
Planner
Project Manager



Brian Courtwright, PE, PTOE
Senior Transportation
Engineer
Lead Concept Designer



Jacob Kaltonbronn, EIT
Transportation Operations
Analyst
Concept Designer



Emily Sanders
CBB Intern

PROJECT BACKGROUND AND GOALS





VISION

PROJECT GOAL

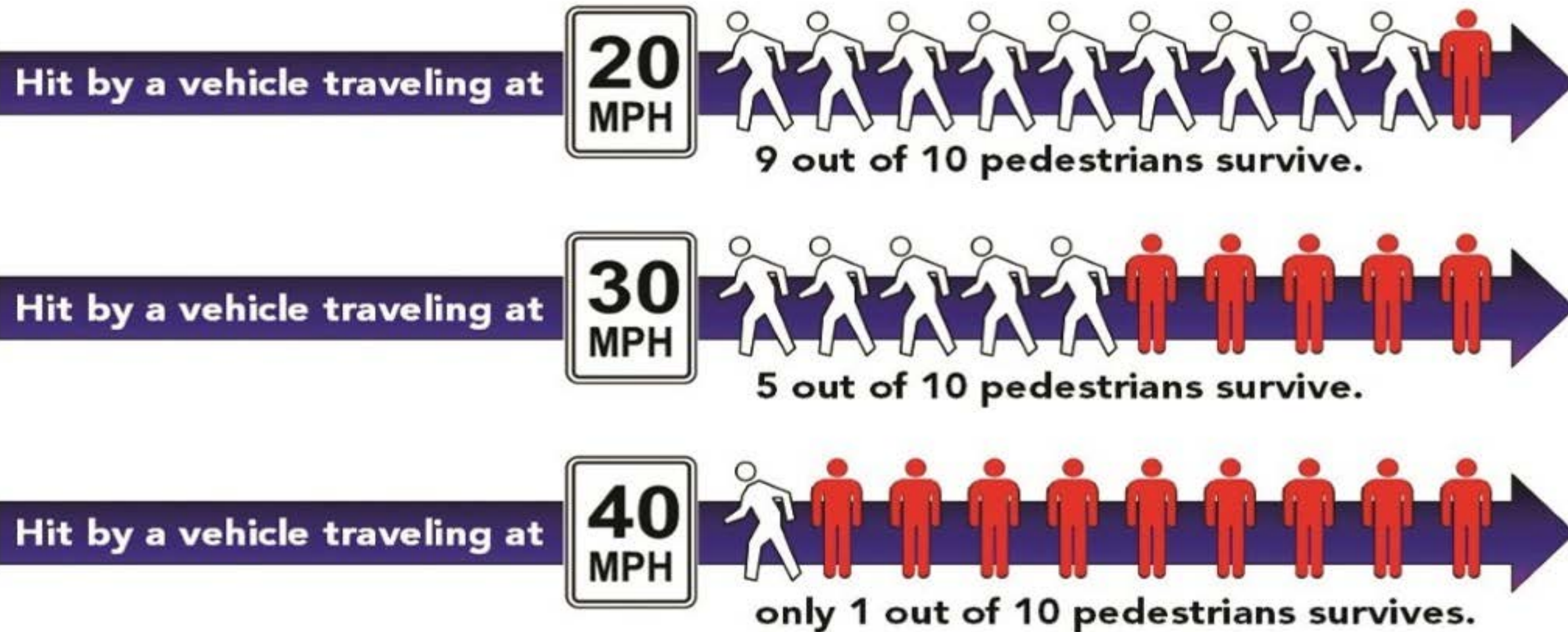
Develop traffic calming recommendations for the Soulard neighborhood to increase safety on the streets for users of all modes of transportation, regardless of age or ability.



OPPORTUNITIES

- Traditional intersection traffic calming (bumpouts, crosswalks, etc.) 1
- Enhance pedestrian safety 2
 - Traffic calming with placemaking/gateway 3
- Mid block traffic calming 4
- Open Streets events 5
- Curb management 6

WHY THIS MATTERS



STUDY PROCESS



STUDY PROCESS

PROJECT TIMELINE



****All recommendations seen tonight are in the concept phase. Final design and implementation per funding and additional neighborhood coordination.**



EXISTING CONDITIONS



DATA COLLECTION PLAN

- Traffic Counts (turning movements, peds, bikes)
 - Russell & 7th
 - Russell & 12th
 - 9th & Geyer
 - 7th & Lafayette
 - 7th & Sidney
- Traffic Speeds
 - 12th (Victor & Sidney)
 - 12th (Ann & Shenandoah)
 - 12th (Russell & Allen)
 - 9th (Victor & Barton)
 - 9th (Allen & Russell)
 - 9th (Soulard & Emmett)
 - Russell (11th & Menard)
 - Russell (9th & 7th)
 - Geyer (10th & 9th)
 - Lafayette (9th & 8th)
- Existing traffic control
 - Stop signs
 - Traffic Signals
- Bike facilities
 - Bike lanes
 - Bike parking
 - Bike wayfinding
- Pedestrian facilities
 - Sidewalks
 - Crosswalks
 - Beautification elements (benches, planters, trashcans, etc.)
- Transit facilities
 - Metrobus facilities
 - Micromobility services

PRIORITY FOCUS CORRIDORS

- 9th (Carroll to Sidney)
- 12th (Geyer to Sidney)
- Geyer (7th to 12th)
- Russell (7th to Gravois)
- Lafayette (7th to 10th)



STUDY AREA

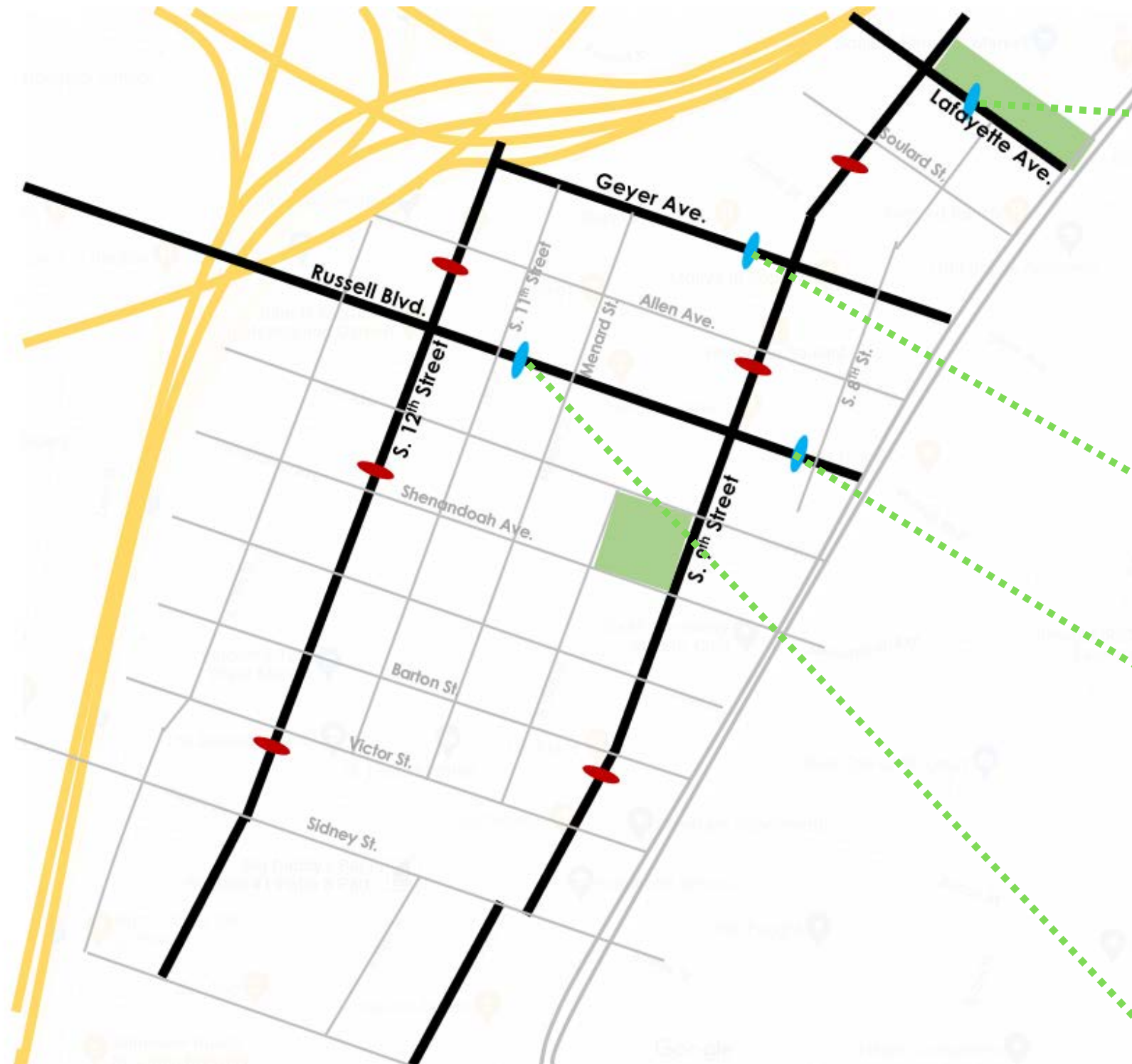
PRIORITY FOCUS CORRIDORS

- 9th (Carroll to Sidney)
- 12th (Geyer to Sidney)
- Geyer (7th to 12th)
- Russell (7th to Gravois)
- Lafayette (7th to 10th)



Souldard Traffic
Calming Study Area

WHAT WE FOUND: SPEEDS



Lafayette

- 85th % - 33mph
- 10% - 70% travelling over 30pm from Midnight - 8am

Geyer

- 85th % - 25mph

Russell

- 85th percentile
 - 35mph (11th & Menard)
 - 37 mph (9th & 8th)
- 20% - 30% travelling over 40mph between 2 and 5am



WHAT WE FOUND: SPEEDS



12th Street

- 85th percentile
 - 33mph (Allen & Russell)
 - 30mph (Ann & Shenandoah)
 - 30mph (Victor & Sidney)
- 10% - 25% travelling over 35pm from 10am - 5am

9th Street

- 85th percentile
 - 30mph (Emmett & Souldard)
 - 27mph (Allen & Russell)
 - 27mph (Victor & Barton)
- No excessive speeds overnight



WHAT WE FOUND

- Want to have a safe place to walk
- Concerns at specific intersections
- mid-block crossing needs
- How to slow down motorists as they enter the neighborhood
- Interested in speed humps
- Metrobus routes important transit connections for neighborhood residents
- Special events are important, and what are ways to better control these

TRAFFIC CALMING RECOMMENDATIONS

- conceptual level recommendations
- design and construction per available funding
- selection of priority areas / treatments



WHAT IS TRAFFIC CALMING

Traffic Calming is the use of speed and volume management strategies to promote safer streets for people walking, biking, and connecting to public transit. Through a series of design interventions, motorist behavior and awareness can be improved.

Examples of traffic calming treatments include curb bumpouts, high visibility crosswalks, speed humps, branding & placemaking, as well as many other treatments





OPPORTUNITIES

traditional traffic calming

1

traffic calming with
gateways/placemaking

2

open streets events

3

curb management

4

NEXT SLIDE



TRADITIONAL TRAFFIC CALMING

WHAT:

- The combination of mainly physical measures that reduce the negative effects of motor vehicle use, alter driver behavior & improve conditions for non-motorized street users (Institute of Transportation Engineers)

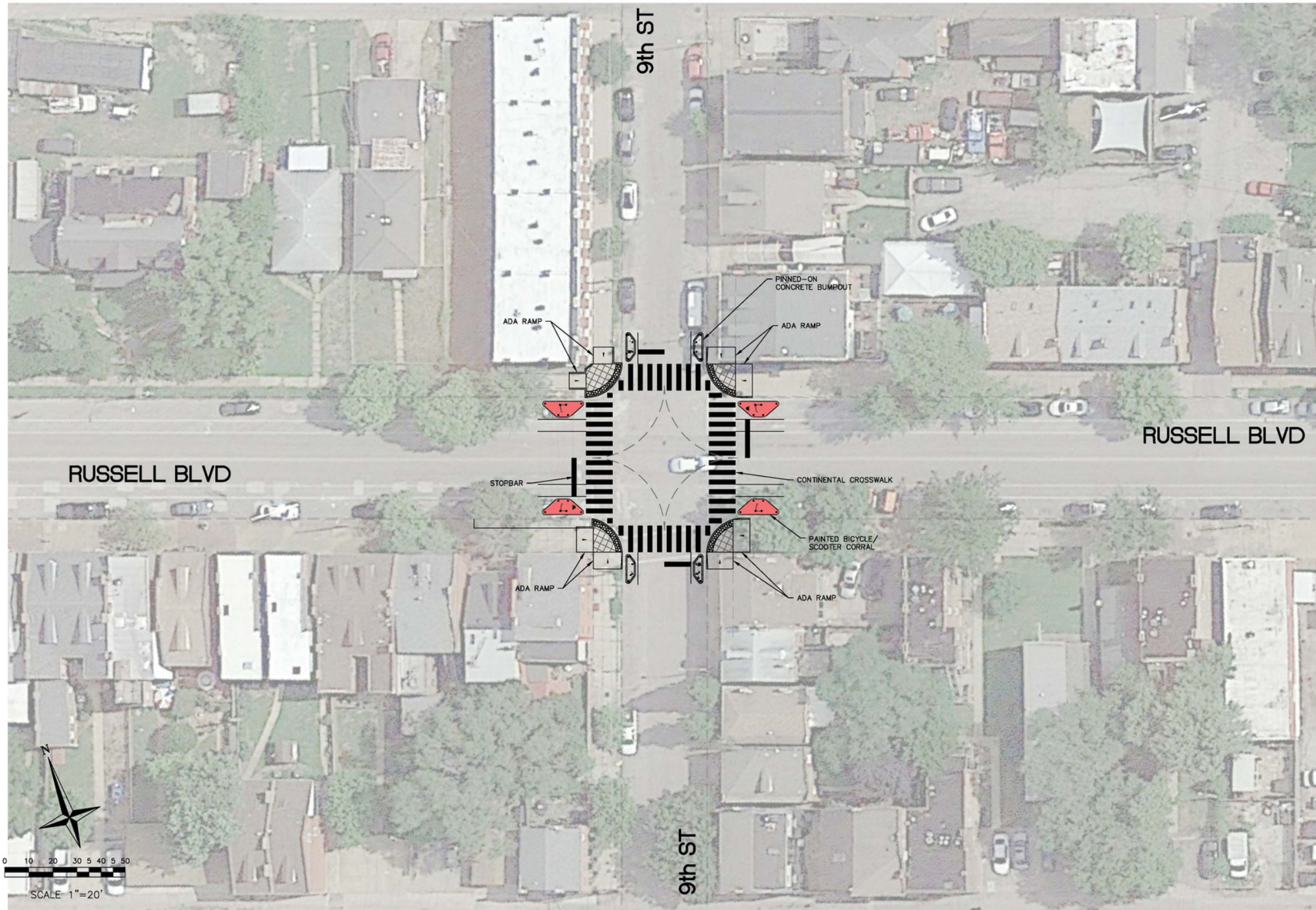
HOW:

- Speed management
- Volume management
- Vertical and horizontal deflection elements to enhance street safety for all users

WHERE:

- Key intersection bumpouts and crosswalks at locations throughout the neighborhood
 - 12th (Victor, Shenandoah, Russell)
 - Menard (Shenandoah, Russell)
 - 9th (Victor, Barton, Shenandoah, Russell, Geyer, Lafayette)
- Speed humps
 - 12th, Lafayette, Broadway & Ann

TRADITIONAL TRAFFIC CALMING



Corporate Engineering
Certificate # 000387

NOT APPROVED
FOR SEALING

CIVIL ENGINEER
DATE PREPARED: 06/08/2022

ROUTE XX STATE MO
DISTRICT XX SHEET NO. 4

COUNTY ST. LOUIS
JOB NO. 093-19-8
CONTRACT ID.

PROJECT NO. XX-XX
BRIDGE NO.

DESCRIPTION

DATE

TRANSPORTATION ENGINEERS-PLANNERS
1400 OLIVE BRICKS, SUITE 400
ST. LOUIS, MO 63141
(314) 788-8844 FAX: (314) 788-8844
ST. CHARLES, MO 63105
ST. LOUIS, MO 63105
ST. CHARLES, MO 63105
ST. LOUISVILLE, IL
www.cobbinc.com

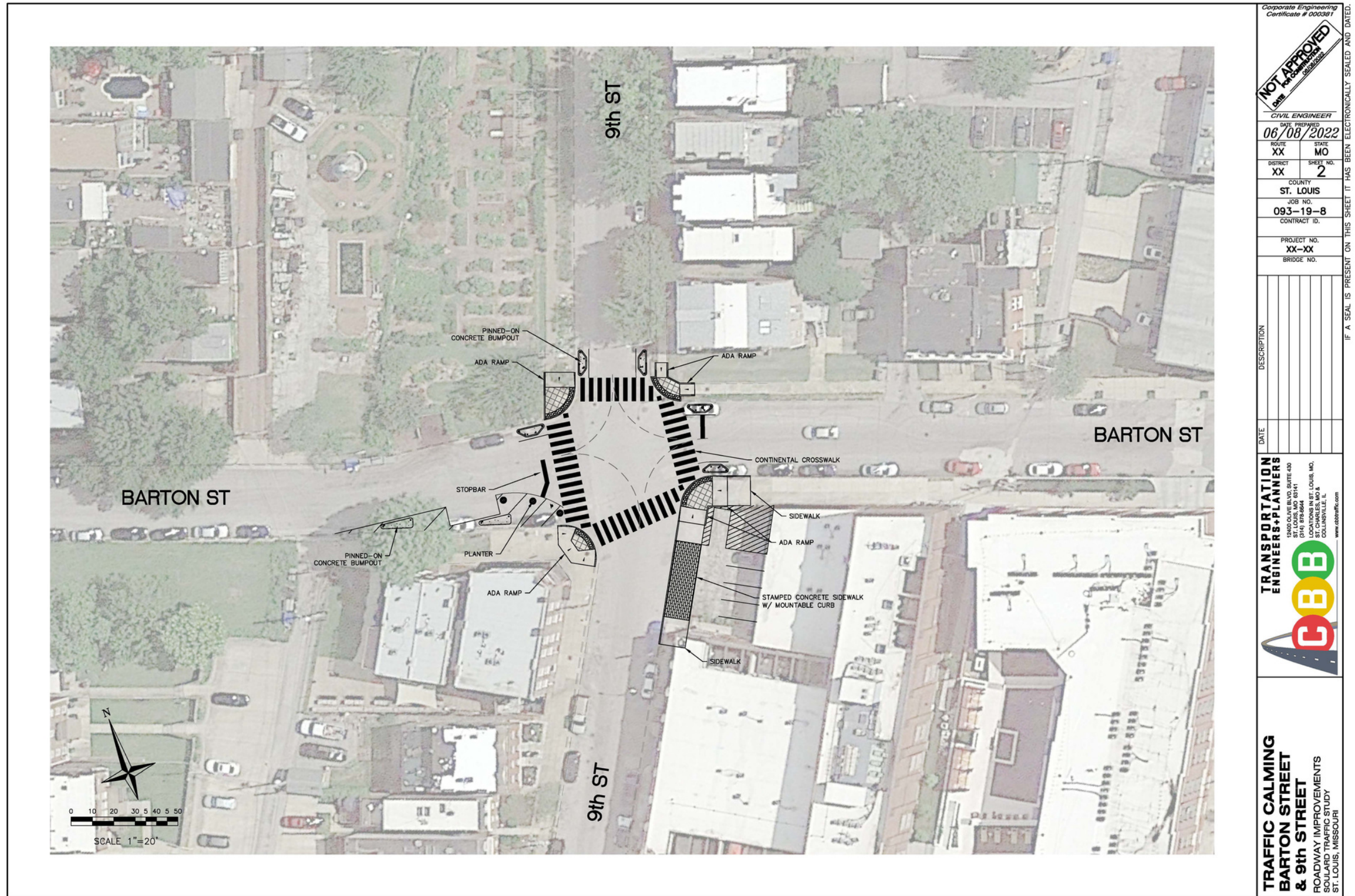
Cobb

**TRAFFIC CALMING
RUSSELL BOULEVARD
& 9th STREET**
ROADWAY IMPROVEMENTS
SOULARD TRAFFIC STUDY
ST. LOUIS, MISSOURI

IF A SEAL IS PRESENT ON THIS SHEET IT HAS BEEN ELECTRONICALLY SEALED AND DATED.



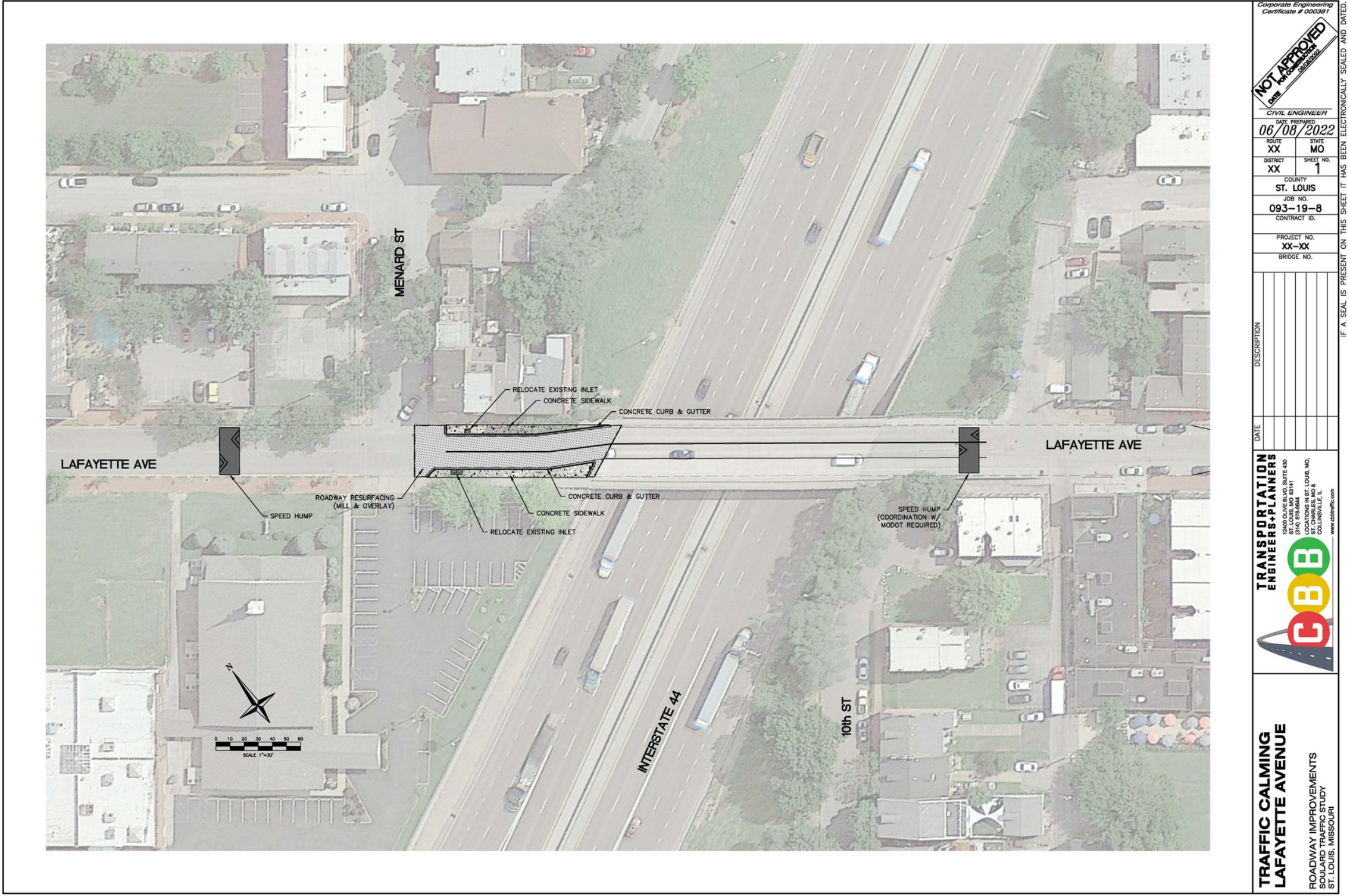
TRADITIONAL TRAFFIC CALMING



TRADITIONAL TRAFFIC CALMING



TRADITIONAL TRAFFIC CALMING



Corporate Engineering Certificate # 000381

NOT APPROVED

CIVIL ENGINEER

DATE PREPARED: 06/08/2022

ROUTE: XX STATE: MO

DISTRICT: XX SHEET NO.: 1

COUNTY: ST. LOUIS

JOB NO.: 093-19-8

CONTRACT ID.:

PROJECT NO.: XX-XX

BRIDGE NO.:

DESCRIPTION	DATE

IF A SEAL IS PRESENT ON THIS SHEET IT HAS BEEN ELECTRONICALLY SEALED AND DATED.

TRANSPORTATION ENGINEERS & PLANNERS

1800 OLIVE BLVD, SUITE 400
ST. LOUIS, MO 63103
(314) 878-8844
LOCATIONS IN ST. LOUIS, MO, COLLINGSVILLE, IL & COLLINGSVILLE, IL
www.tbber.com

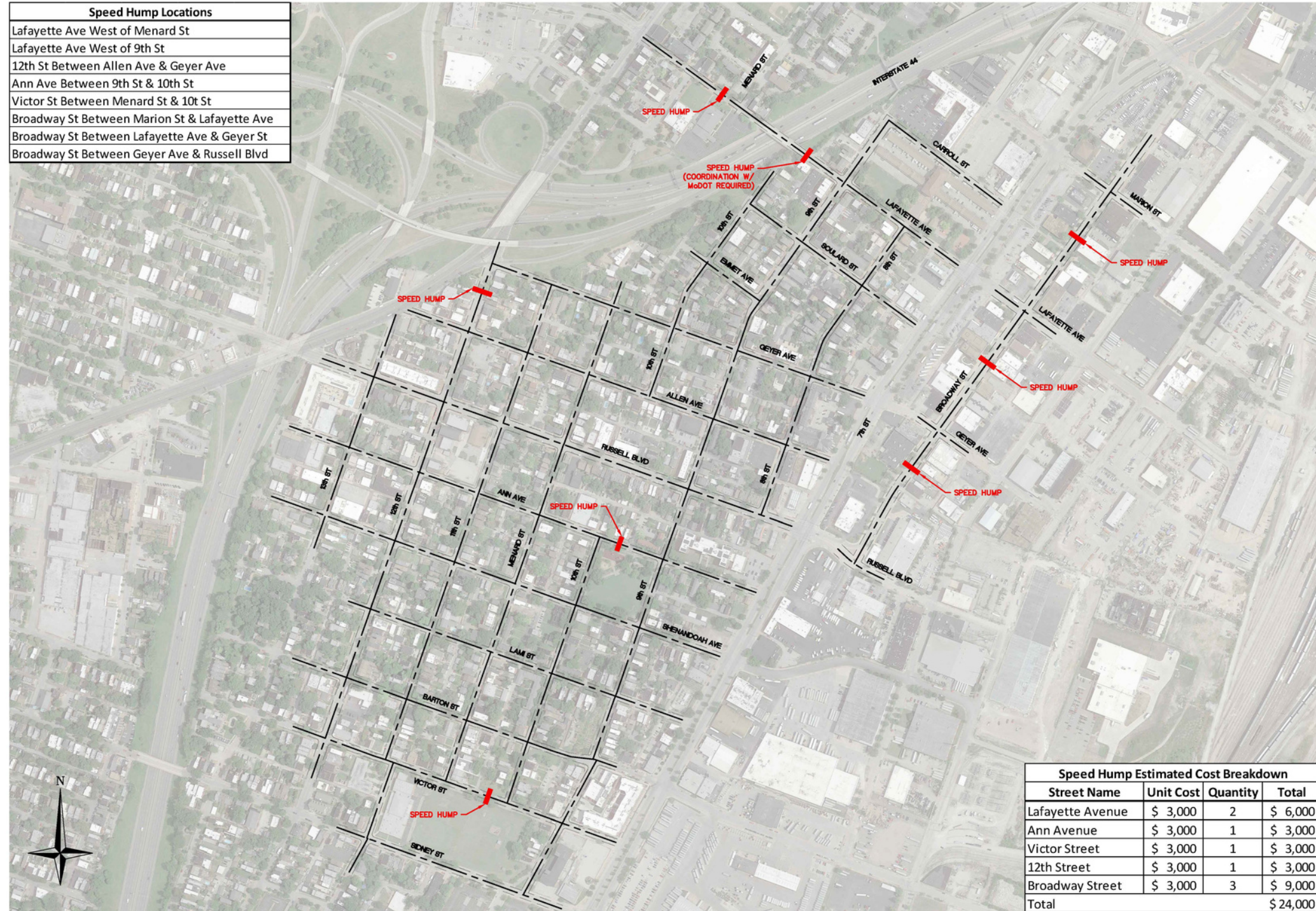
TRAFIC CALMING LAFAYETTE AVENUE

ROADWAY IMPROVEMENTS
SULLARD TRAFFIC STUDY
ST. LOUIS, MISSOURI



TRADITIONAL TRAFFIC CALMING

Speed Hump Locations
Lafayette Ave West of Menard St
Lafayette Ave West of 9th St
12th St Between Allen Ave & Geyer Ave
Ann Ave Between 9th St & 10th St
Victor St Between Menard St & 10th St
Broadway St Between Marion St & Lafayette Ave
Broadway St Between Lafayette Ave & Geyer St
Broadway St Between Geyer Ave & Russell Blvd



Speed Hump Estimated Cost Breakdown			
Street Name	Unit Cost	Quantity	Total
Lafayette Avenue	\$ 3,000	2	\$ 6,000
Ann Avenue	\$ 3,000	1	\$ 3,000
Victor Street	\$ 3,000	1	\$ 3,000
12th Street	\$ 3,000	1	\$ 3,000
Broadway Street	\$ 3,000	3	\$ 9,000
Total			\$ 24,000

Corporate Engineering
Certificate # 000381

NOT APPROVED
DATE: 06/08/2022

CIVIL ENGINEER
DATE PREPARED: 06/08/2022

ROUTE XX STATE MO
DISTRICT XX SHEET NO. 1
COUNTY ST. LOUIS
JOB NO. 093-19-8
CONTRACT ID.

PROJECT NO. XX-XX
BRIDGE NO.

DESCRIPTION

DATE

IF A SEAL IS PRESENT ON THIS SHEET IT HAS BEEN ELECTRONICALLY SEALED AND DATED.

TRANSPORTATION ENGINEERS+PLANNERS
1240 OLIVE BLVD, SUITE 430
ST. LOUIS, MO 63101
LOCATIONS IN ST. LOUIS, MO,
ST. CHARLES, MO &
COLUMBIA, IL
www.cbbp.com

G B B

TRAFFIC CALMING SPEED HUMP LOCATIONS
ROADWAY IMPROVEMENTS
SOUTHWEST TRAFFIC STUDY
ST. LOUIS, MISSOURI

GATEWAY/PLACEMAKING TRAFFIC CALMING

WHAT:

- Enhance the sense of place within the neighborhood as a visual cue to motorists for the high level of street activity for all users

HOW:

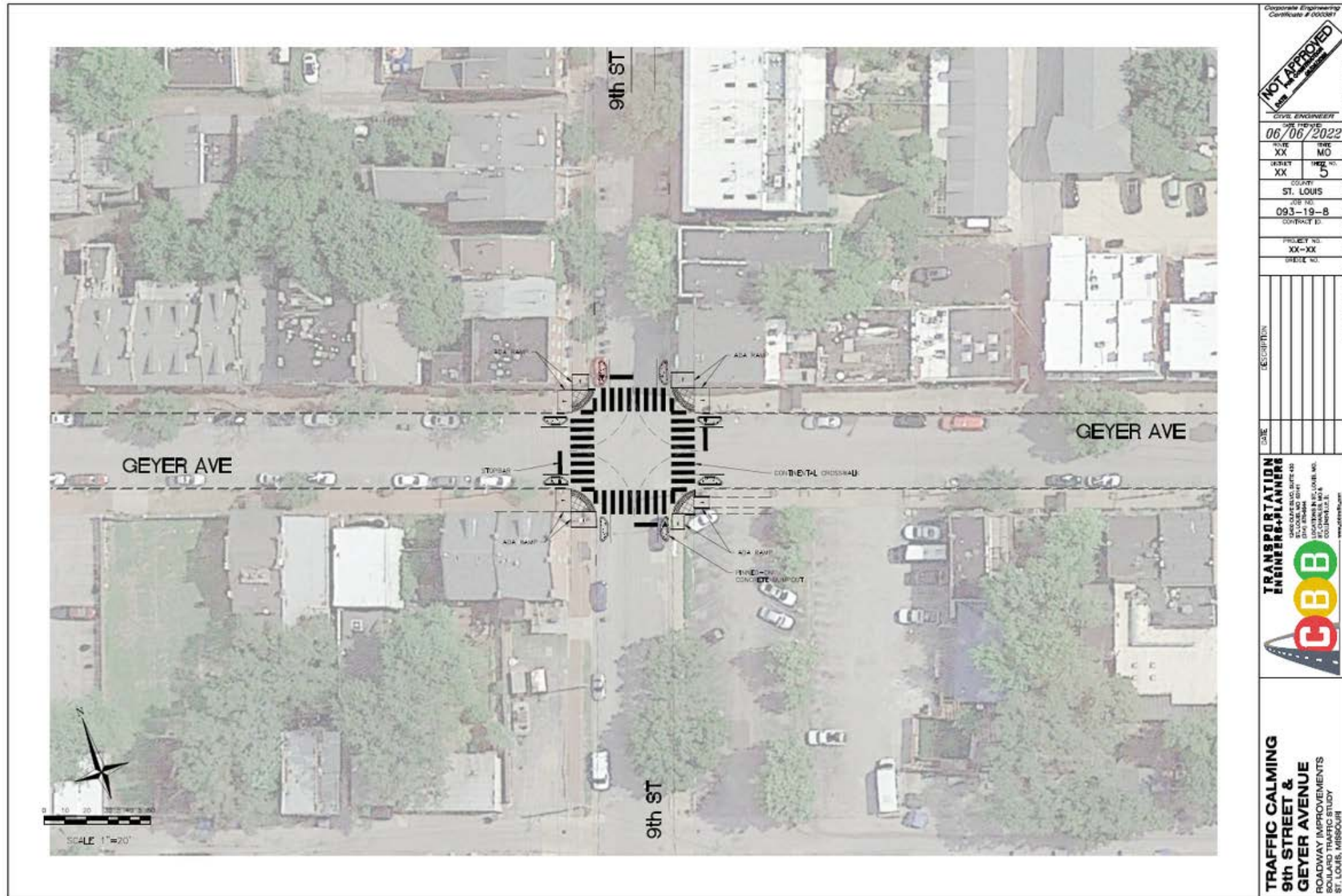
- Painting, benches, planters, etc.

WHERE:

- Key intersections throughout the neighborhood where additional pedestrian enhancements provide gateway treatments and placemaking opportunities
- The use of planters and gateway treatments throughout the neighborhood



GATEWAY/PLACEMAKING TRAFFIC CALMING



Corporate Engineering
Certificate # 000081

NOT APPROVED
DATE: 06/06/2022

CIVIL ENGINEER

DATE: 06/06/2022

XX MO

XX

XX

ST. LOUIS

093-19-8

PROJECT NO. XX-XX

DATE: 06/06/2022

DESCRIPTION

DATE

TRANSPORTATION ENGINEERS-PLANNERS

CBB

TRAFFIC CALMING
9th STREET &
GEYER AVENUE
ROADWAY IMPROVEMENTS
BOULVARD TRAFFIC STUDY
ST. LOUIS, MISSOURI

F.A. SEAL IS PRESENT ON THIS SHEET IF HAS BEEN ELECTRONICALLY SIGNED AND DATED.



OPEN STREETS EVENTS

WHAT:

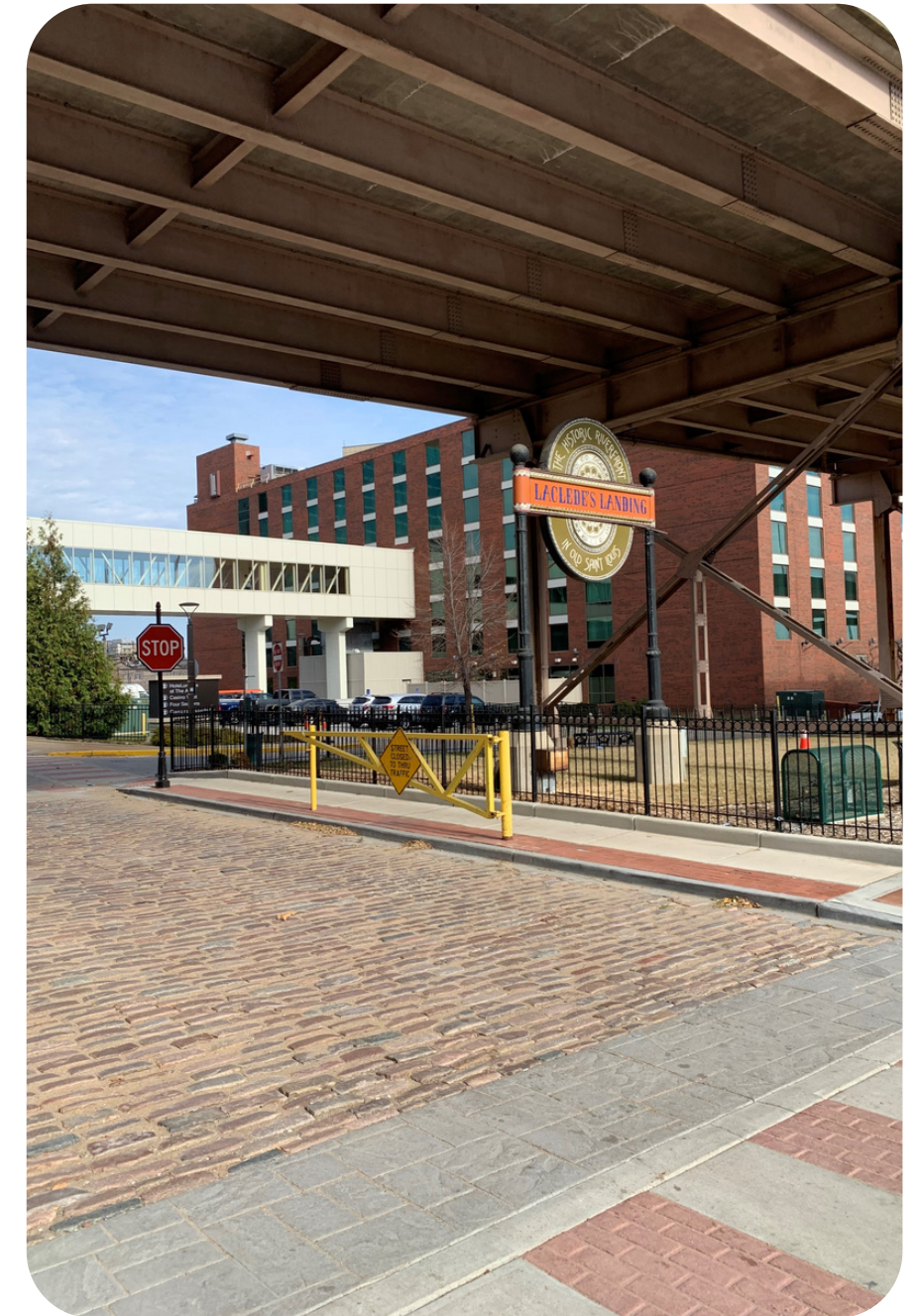
- Open streets to people and close to motorists during peak weekend and evening times for additional dining, drinking & recreation opportunities
- These are special events and will happen only periodically on an agreed-upon schedule

HOW:

- Traffic control plans and residential/business information for procedures
- Set days of the month and times
- Build off of initial event and support for more events in the future

WHERE:

- Geyer from 9th to 8th



CURB MANAGEMENT

WHAT:

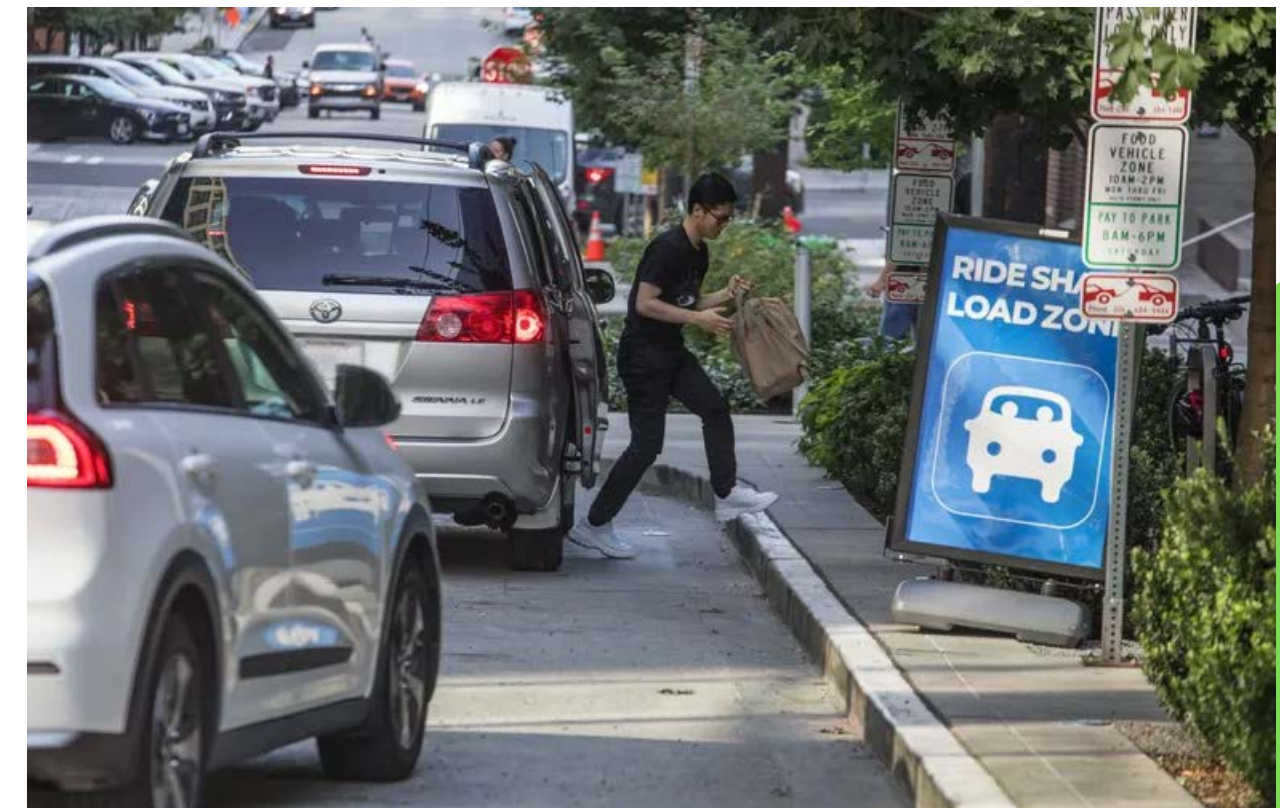
- See curb spaces as a valuable asset for space within our cities
- Manage many competing uses to provide room for multiple modes of transportation

HOW:

- Dedicated spaces at the curb for various uses (shared mobility, micromobility, short term parking, etc.)
- Signage and educational campaign

WHERE:

- TBD following further resident engagement



NEIGHBORHOOD WIDE RECOMMENDATIONS



Neighborhood wide recommendations do not indicate priority level for implementation. All recommendations are at the conceptual and planning phase. Final design and implementation per funding and additional neighborhood coordination.

KEY	
●	Intersection traffic calming
★	Gateway/branding traffic calming
▭ (dashed red)	Open streets events
▬ (blue)	Speed humps
⚡ (yellow)	Pedestrian flashing beacon

QUESTION & ANSWER



THANK YOU!

JACQUE KNIGHT, AICP
CBB
JKNIGHT@CBBTRAFFIC.COM

ANDREW RIGANTI
CITY OF STL BPS
RIGANTIA@STLOUIS-MO.GOV

